

<http://ihsc.worc.ac.uk/dementia>

Contents

Acknowledgements.....	5
Foreword	6
Introduction.....	7
Executive Summary.....	8
Description of the Service.....	12
The current evidence base for Day Opportunities for people living with dementia.....	13
Evaluation Process.....	16
Evaluation underpinned by VIPS Framework of person-centred dementia care.....	17
Valuing - Putting people first	21
Individualised approach – Personalisation of care & support	29
Perspective of service users – Look at it through my eyes.....	35
Social environment to support psychological needs – supporting dignity, respect and empowerment.....	39
Delivery of Specified Service Outcomes	44
Cost-Benefit Considerations	48
Conclusion.....	50
References.....	52

Foreword

\ Ugb Nn VYYb 'Ub 'cbYfci g'hUg_ 'U

Excellence in Dementia Care.

Centres of

Executive Summary

o

o

o

o

o

o

o

o

l

o

o

Description of the Service

dYcd`Y`k]h` XYa Ybh]U`k \c`a YYh`h`Y`V`i bhm`V`i bW]`g`Y`][]V]`]hm`V`]hYf]U`""

Zfca `h`Y`gYfj]W`k]h` `U`a]l `cZcbYz`tk c`UbX`h`fYY`XUm]`g`UmYbXUbW`""`H`Y`

h`Y`UggYgga Ybh`d`f`c`W`gg`i bXYf`h`U`_Yb`V`m`h`Y`V`i bhm`V`i bW]`g`i`gc`V]U` `W`fY`

VfYU`_`k]h`ci`h]a`d`U`M]b[`cb`h`Y`W]Ybh]`NYI`d`Yf]YbW`""`H`[g`Z`YI]V`Y`g`h`U`Z]b[`

The current evidence base for Day Opportunities for people living with dementia

Living well with dementia: the National Dementia Strategy

fgÑGhfUHy[m' < ck Yj Yf'XUmgyfj]Wg'Wlb'U'gc'Vēbhf]Vi hY'hc'

-
- *Putting People First*
-

i gYfñg_]`g/

Vta dfY\Ybgjj Y'UggYgga YbhcZUb]bX]j]Xi U'ñg'Zi hi fY'WfY'

K]h]b'h\Y'ZfUa Yk cf_`C V'YWñj Y'+.GYfj]Wg'k]h]b'h\Y'7 UfYfgñGhfUHy[m'
Improving services and support to people with dementia and their carers

K \Yb'dYcd`Y'k]H`5`n\Y]a Yfj`XYa Ybh]U'k YfY`Ug_YX`tc'h\]b_`UWci h\ck`

; fci d`gj`ddcfh]g`gYb`tc`\Uj`Y`U'dcg]hj`Y`]a dUW`cb`dYcd`Yfj`dYfWdh]cb

Evaluation Process

-
-
-
-
-
-
-
-
-
-

V v

Personal Perspectives

Valuing people with cognitive disabilities and those

Í h\Y]f`W V"Í

V 2 Human Resources Management Í

Rating: Excellent

V 3 Management Ethos ĩ

Rating: Excellent

G\Y\Ug'Uj Yfmĭ \UbXg:cbĪ 'UddfcUWžk \JW 'YbUV'Yg\Yf'hc''YUX'Vm'YI Ua d'Y''

UbX'XYHJ'icZW ffYbhUbX'dfYj]ci g'a cbhgñUWj]mdfc[fUa a Yg'

V 4 Training and Staff Development I

Rating: Excellent

Figure 1: Summary of DCM data from Monday 18th January 2010

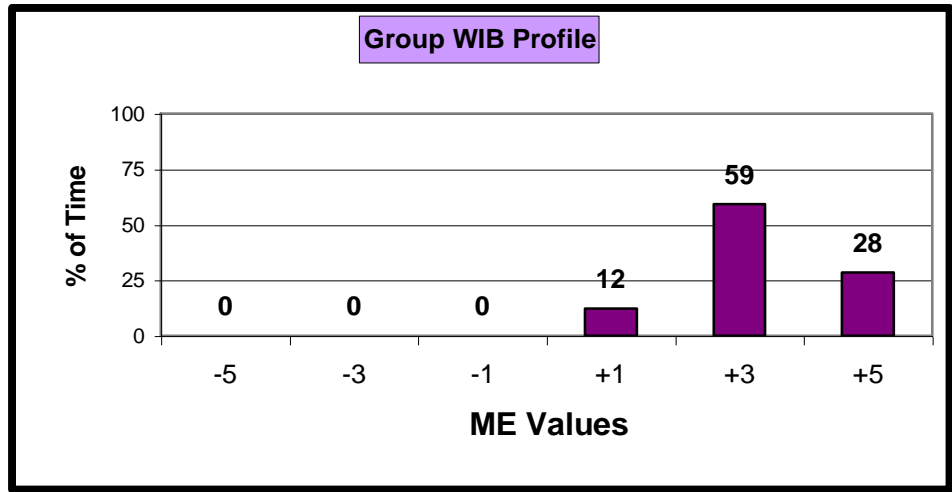
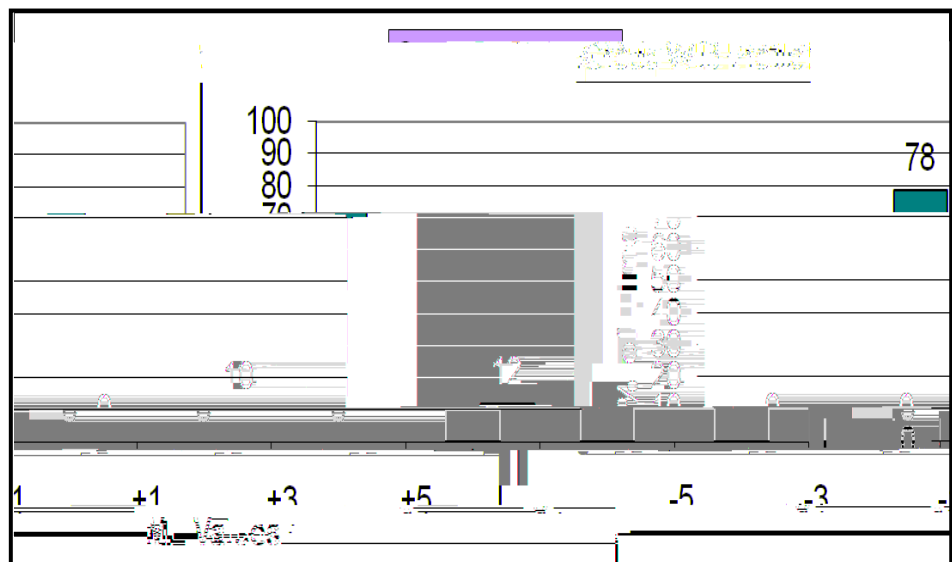


Figure 2: Summary of DCM Data from Tuesday 19th January 2010



hYb`İ fYdcfngj`Zfca`h\Y`WbhfY`hc`\\Y`d`h\Ya`]b`h\Y]f`fc`Y`Wf]b[`UhU`
dfcZYgg]cbU`g`k`YfY`W`b`Z]X`Y`b`h]b`<`@8`7`Ng`UV]`]m]h`c`a`cb]h`c`f`U`b`X`f`Y`j`]Y`k`

I 3 Personal Possessions

k \]`ghZUW]hU]b['U[Ua Y'cZei c]hgghUZZUXXYX'hc'dYcd`YŃj Yb'cma Ybhk]h

Ugî WXYU]b[ĩ ""'9j Yfmigj WYggk Ug'W'YVf

I 5 Life History ĩ

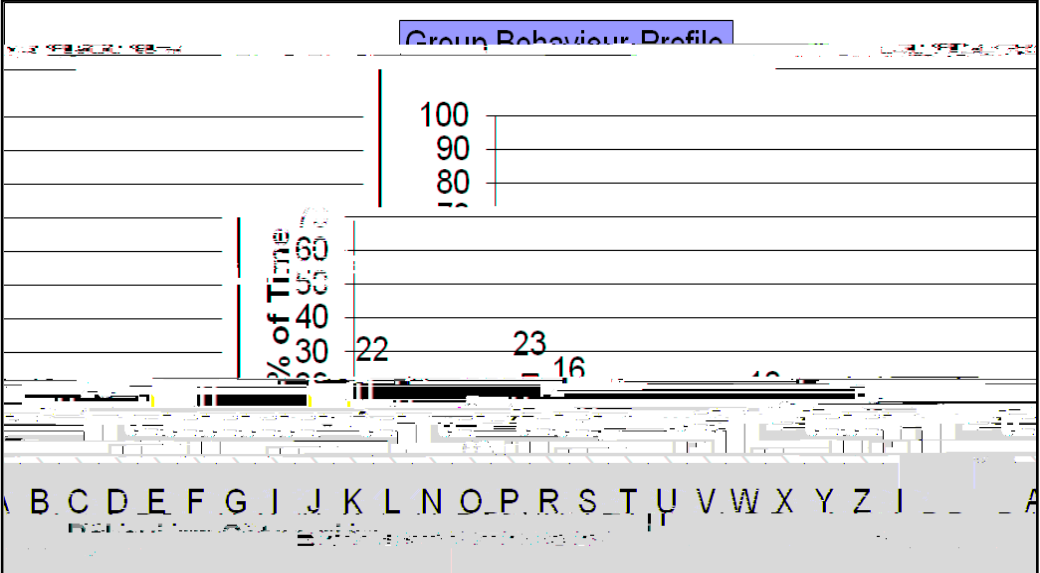
Rating: Excellent

I 6 Activity and Occupation I

Excellent.

Rating:

Figure 4: Type of behaviours and activities that were most prevalent during dementia care mapping on Monday 18th January 2010



Personal Perspectives – Looking at the world from the perspective of the Person with Dementia

P 1 Communication with Service 1

Rating: Excellent

WbhfYX`Wta a i bJWhjcb`frc`Ybgi`fY`h`UhdYcd`Yfj`k`Jg`Yg`UbX`

VY'fi VV]b[]hUWcgg'hY'hUV'Yžh'Y'a Ya VYf'cZghUZZ'g'fYgdcbgY'k Ug'İ h'Ub_'mci '
for clearing that up, shall I get you a cloth and ~~ZIFD~~~~ED~~~~DN~~~~DM~~~~ER~~~~L~~~~M~~

S 3 Warmth İ

Rating: Excellent.

k Ug'h'Uh'h'Y'g'UZZ'fYU'm'W'fYX'UVci h'h'Y]f''cj YX'cbYgž]hk Ugb'ñh'UVci h'

İ [c]b['h'Y'Yi hfU'a]'Yİ 'Zcf'h'Ya 'UbX'h'Y]f''cj YX'cbYžgcfh]b['ci h'

G]a d'Y'[Ygfi fYg.'a U_]b['J U'Ybh]bY'W'fXg'cf'fYa Ya VYf]b['U'XUi [\h'Yf'ñg'

H\Y'a U^cf]hmicZ\WfYfg]bhYfj]Yk YX'ZY'hi\Y'gYfj]W'Vei`XbñhVY'VYHfYFX"fgYY'

S6 Part of the community I

Rating: Excellent.

XYa cbgrUHg'< @8 7 ñ'cdYbbYgg'UbX'k]``]b[bYgg'hc`VY'dUfhcZ'hY'k]XYf'

Transport

Včbhf]Vi h]cb'hc'h\Y'W]Ybhf]k Y''VY]b['k Ug]a a YUgi fUV'Y''H\]gj]Yk 'k Ug'

Î Wi VÍ ''H\Y'ghUZZ'UbX'a UbU[Yfg'W]hX'h\]g'UbX'ch\Yf'YI Ua d'Yg'Ug'Yj]XYbW'
h\Y'dchYbh]U'Zcf'h\Y'gYfj]W'bch'hc'VY'î ě]bYX'i d'î "

Î]gb]h]h[ccXžk Y]j]Y[chU'ZYk 'a cfY'a]bi hYg' ''9j YfmbY'a A



Figure 6. Carers rating of transport arrangements for HLDC

